



Acme Sanitary Ware Co Ltd





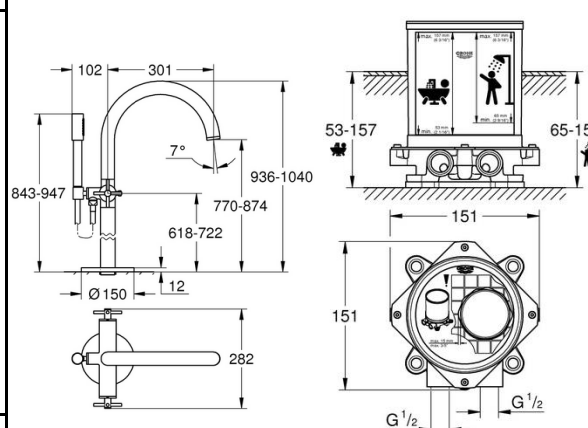

Acme Building, 22-28 Nanking Street, Kowloon, Hong Kong
 Tel: 2388 7171 Fax: 2710 8012
 E-mail: acme@acmesanitary.com.hk
 Website: www.acmesanitaryware.com.hk



Pure Freude
an Wasser

PROJECT		REF		REV	ITEM CODE	
LOCATION		DATE			PAGE	

SANITARY WARE SPECIFICATION SHEET

Item Descriptions	GROHE (Germany) "Atrio" Floor mounted single-lever free stand bath & shower mixer 1/2" with single functions hand spray; nominated flow rate 6.3 L/min in WELS Grade 1 ; Registration No. SB 18-0030		Illustration/ Drawing		
Dimensions	L301 x W282 x H1040 mm		 <div></div>		
Model	25044003 (Mixer) 45984001 (Mounting box)				
Finish / Material	Chrome Plated				
Country of origin	Germany				
Manufacturer	GROHE Limited				
Supplier	Acme Sanitary Ware Co. Ltd Mr. Eric Wong/ Mr. Don Yuen				
Contact Tel/Fax	(852) 2388-7171 / (852) 2710-8012				
E-mail	acme@acmesanitary.com.hk				
Website	www.acmesanitary.com.hk				
Single-lever bath & shower mixer 1/2" <ul style="list-style-type: none">• floor-mounted installation with high pillar unions (765 mm)• set for final installation for• ceramic headparts 1/2", 90°• GROHE StarLight chrome finish• automatic diverter: bath/shower• swivel tubular spout with mousseur and stop limiter• projection 301 mm• integrated non-return valve in the shower outlet 1/2"• hand shower Sena Stick (26 465)• with shower holder• Silverflex shower hose 1250 mm (28 362)• protected against backflow• with cross handles• Two different sets of caps included. One set with "H" and "C" marking, one set without marking.		Rough-in set 1/2" <ul style="list-style-type: none">• for floor-mounted bath mixers/spouts and shower mixers• without finishing trim set• installation plate with 360° horizontal and 3° vertical adjustment• installation depth 53-157 mm for bath mixers/spouts, depth compensation 104 mm• installation depth 65-157 mm for shower mixers, depth compensation 92 mm• two 1/2" female connections (hot/cold supplies)• flushing plug• Can take a single mixed supply• fixing material			
		 <div>25044DC3 25044DA3 25044GL3 25044AL3</div>		Colour options: <div><div><div>003 StarLight Chrome</div><div>DC3 SuperSteel</div><div>DA3 Warm Sunset</div><div>A03 Hard Graphite</div><div>AL3 Brushed Hard Graphite</div></div><div><div>GL3 Cool Sunrise</div><div>GN3 Brushed Cool Sunrise</div><div>DL3 Brushed Warm Sunset</div><div>BE3 Polished Nickel</div><div>EN3 Brushed Nickel</div></div></div>	

Note: [YouTube \(GROHE Atrio Product\) https://www.youtube.com/watch?v=HJDtY_EFMdM](https://www.youtube.com/watch?v=HJDtY_EFMdM)

[YouTube \(Mounting box\) https://www.youtube.com/watch?v=6dTaw9z96So](https://www.youtube.com/watch?v=6dTaw9z96So)

* All information of the above is for the reference only. No prior notice is made if any changes.



Acme Sanitary Ware Co Ltd

Acme Building, 22-28 Nanking Street, Kowloon, Hong Kong
Tel: 2388 7171 Fax: 2710 8012
E-mail: acme@acmesanitary.com.hk
Website: www.acmesanitaryware.com.hk



Pure Freude
an Wasser

PROJECT		REF		REV	ITEM CODE	
LOCATION		DATE			PAGE	

SANITARY WARE SPECIFICATION SHEET

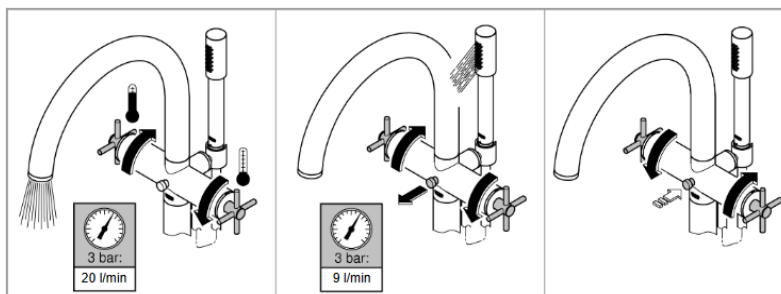
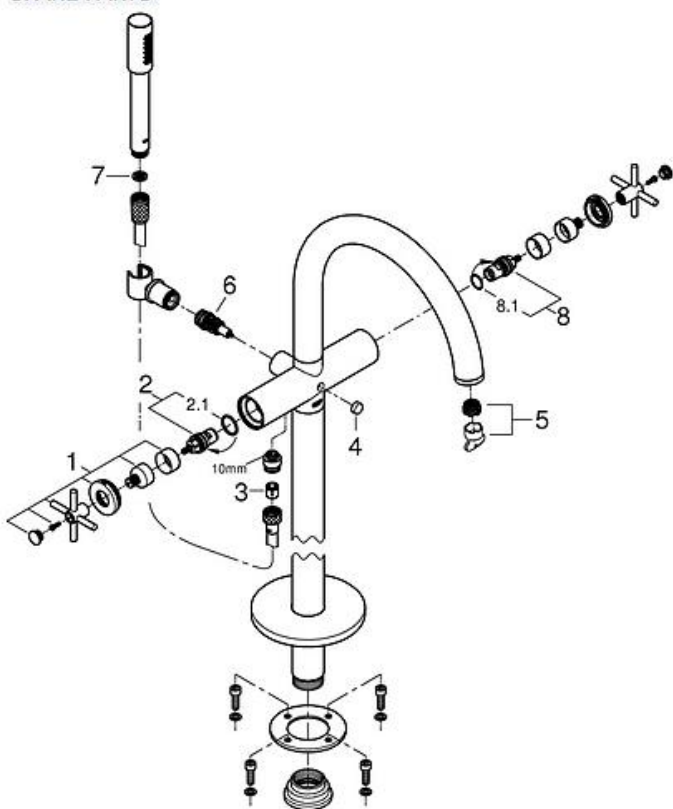
GROHE ATRIO

THE ICON OF ELEGANCE AND PRECISION

Consider the circle. A staple of natural geometry. A pure form at once soothing and dynamic. A visual metaphor for both, completeness and eternity. For its Atrio collection GROHE draws on this most elemental and elegant form to create an iconic object that is built to last.

The Atrio collection means design without restrictions. Each item is available in various finishes and size options to meet all demands of personal taste and different design schemes.

SPARE PARTS



Pos.-nr.	Prod. description	Order-nr.
1	Pair of handles	48406000
2	Ceramic headpart, 1/2"	45883000
2.1	O-ring Ø 18.2 x Ø 1.7	0392400M
3	Non-return valve	08565000
4	Diverter knob	64989000
5	Mousseur	13926000
6	Diverter	48407000
7	Dirt strainer	0700200M
8	Ceramic headpart, 1/2"	45882000
8.1	O-ring Ø 18.2 x Ø 1.7	0392400M

Note:

* All information of the above is for the reference only. No prior notice is made if any changes.

註冊號碼 (Registration No.): SB 18-0030




自願參與用水效益標籤計劃 - 沐浴花灑
Voluntary Water Efficiency Labelling Scheme - Showers for Bathing



將下列花灑在本計劃內註冊：
has registered the following shower under this scheme :

牌子 / Brand	:	GROHE
型號 / Model	:	26465XXX
原產地 / Country or Region Origin	:	Germany

在用水效益標籤上展示的標誌 <i>Symbolic Presentation on the Water Efficiency Label</i>	:	 滴水點 <i>Water droplet(s)</i>
用水效益級別 <i>Water Efficiency Grade</i>	:	1
耗水量 <i>Water Consumption</i>	:	6.3 公升/分鐘 <i>litres/minute</i>

簽發日期:
Date of Issue: 14 February 2018



水務署
Water Supplies Department



水務署署長(周世威代行)
for Director of Water Supplies



水務署
Water Supply Department



總部 Headquarters

香港灣仔告士

48/F, Immigration

大廈水務署

樓

road, Wan Chai, Hong Kong

本署檔號 : (2) in WSD 3321/19 Pt.1 T/J(183)
Our ref.
來函檔號 :
Your ref.

電話 :
Tel.
傳真 : 2824 0578
Fax.

13 March 2019

Approval of "GROHE" Bath/Shower Mixer (General Acceptance No. C20190181)

Your letter ref. WRC/2041 dated 14 February 2019 refers.

Having considered the test report ref. J23609 issued on 21 January 2019 by Nutek Systems (HK) Ltd., this Authority accepts that the fitting described below complies with, and its use when correctly installed does not contravene, the Waterworks Ordinance and Regulations.

Name of Manufacturer: Grohe AG
Country of Origin: Germany
Brand: Grohe
Details of Fitting: 1/2" Floor mounted single lever bath/shower mixer
Model: 45984001 + 25044XX3
(where the digits "XX" denote the code of colour)
Body Markings: 
Expiry Date: 26 November 2023



This Authority hereby permits the use of the above fitting in fresh water plumbing systems subject to full adherence to Waterworks installation requirements. In particular, you are required to draw your customers' attention to the following requirement-

"The cold water supply to the fitting shall be drawn from the same source that supplies the hot water apparatus so as to provide a balanced pressure and to obviate the risk of scalding in the event of a restriction or failure in the water supply." AND

"The shower head or handspray should not be placed in submerged conditions and should be securely fixed to the original position after use."

A condition of this acceptance is that the fitting to be installed shall be replicas of the sample as certified by the testing agent mentioned above and without modifications. This acceptance may be withdrawn at any time if the standard of the fitting installed fails to meet that of the approved sample or if the fitting is found to be unsuitable for use in fresh water plumbing systems.

This acceptance is only applicable to the main body of the fitting, unless other specified.

For the use of the fitting in any project, the General Acceptance Number of this letter must be quoted as a means of identification of acceptance of the fitting by this Authority.

Should you have any enquiries, please contact our Engineer Mr. Terry KUNG at tel. no. 3583 4086.

Yours faithfully,



(CHAN Chung-kun)

for Director of Water Supplies

Encl.

c.c. WSD 3321/1/82] - without catalogue
 ME/MC] - with soft copy only